

NORTH BERWICK COASTAL WARD LOCAL PRIORITIES SURVEY



Over July – September 2011 a survey looking at local community priorities for action was run as part of Local Community Planning initiatives across the ward. The survey was promoted through the local media, available at North Berwick Community Centre and Local Community Planning events, and distributed directly to a range of local groups and organisations across the ward.

What the survey showed

The survey presented respondents with 29 areas for action and asked people to indicate whether they felt each one was a high, medium or low priority for action in the North Berwick Coastal ward

The list below shows these options in the order in which they were ranked overall, from highest to lowest priority.

1. More activities for young people
2. Road and pavement repairs
3. Local jobs for local people
4. Improve access to Health Services
5. Attract more shops / businesses
6. Improve care of the elderly
7. Improve public transport
8. Increase 'sense of community'
9. Open up existing community facilities for more uses
10. Improve parking
11. Cleaner beaches and coastlines
12. More activities for children
13. Address drug issues in our community
14. Improve parks and open spaces
15. Improve or expand Sports and Leisure facilities
16. Address anti-social behaviour in the community
17. Build more affordable housing
18. New community facilities
19. Improve recycling facilities
20. Reduce vandalism
21. Improve cultural facilities
22. Improve traffic management / reduce traffic congestion
23. Improve our school buildings
24. Address binge drinking in our communities
25. Make the streets safer at night
26. More opportunities for adult learning and classes
27. Cleaner streets
28. Make the streets safer during the day
29. Improve street lighting



What is it all about?

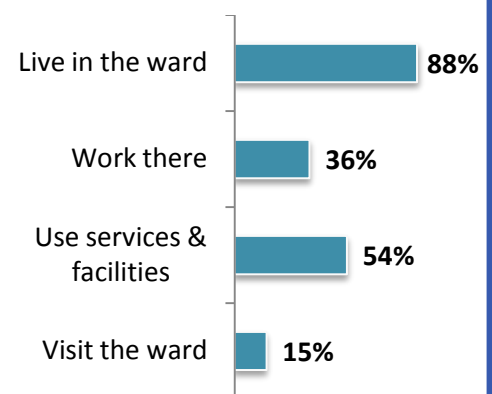
Local Community Planning is about communities and service providers working together to identify and address local needs, issues and concerns. This process begins with wide consultation across the ward in order to create a Local Community Plan.

To find out more about Local Community Planning in the North Berwick Coastal Ward call 0131 6534068 or 0131 6534065 or visit our webpage - www.eastlothiancommunityplanning.org.uk/northberwick.aspx

Who took part?

198 people completed the survey

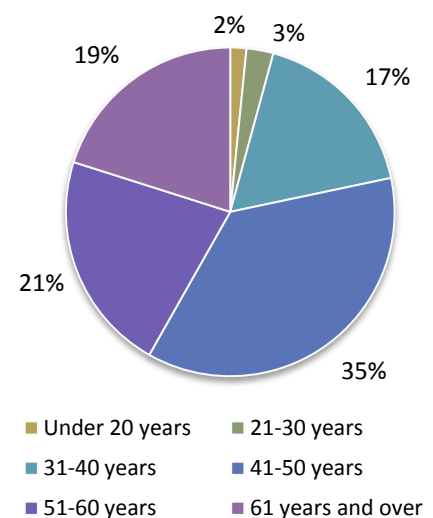
75% of all respondents completed the survey on-line



Of those who live in the ward

- 20 % live in Aberlady
- 21% live in Gullane
- 8% live in other small villages or rural areas

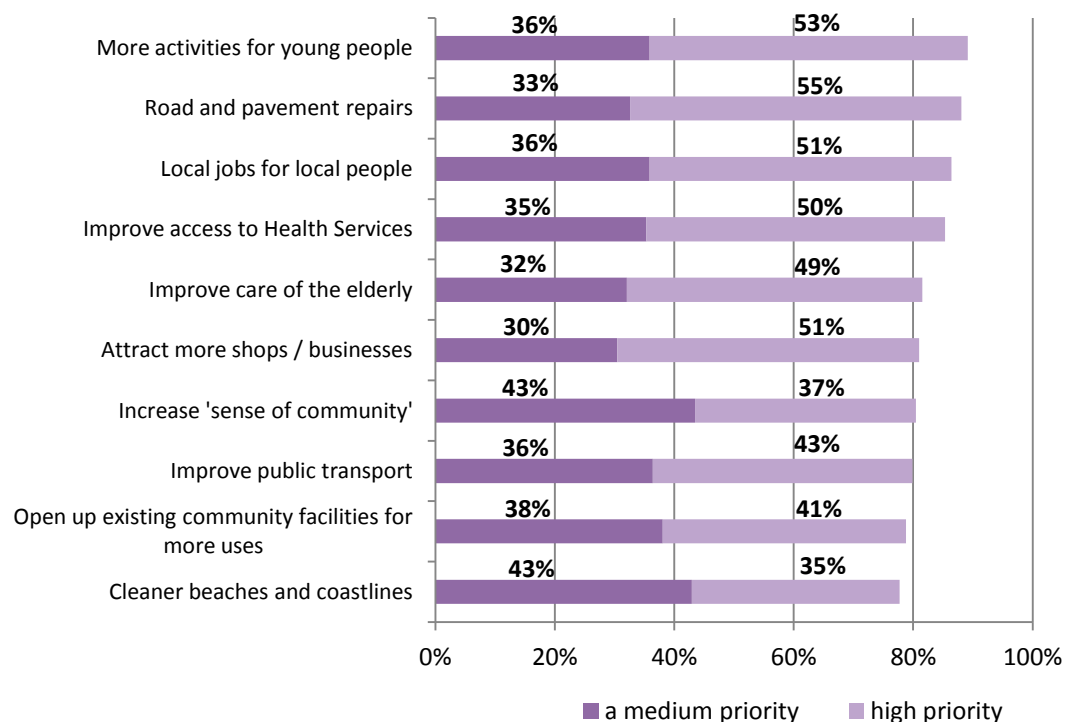
Age of respondents



LOCAL COMMUNITY PLANNING
Making a Difference
in the North Berwick Coastal wards



Top 10 Priority areas for action combining High and Medium priority answers



Variations across the ward

Priorities for action varied across the ward and this has been taken into account in analysing the survey results.

Top 5 priorities for Gullane

1. Improve or expand Sports and Leisure facilities
2. More activities for young people
3. Improve parks and open spaces
4. More activities for children
5. New community facilities

Top 5 priorities for Aberlady

1. More activities for young people
2. Road and pavement repairs
3. Cleaner beaches and coastlines
4. Improve recycling facilities
5. Improve public transport

What happens next?

- This survey has been designed to complement community consultation events that have taken place in North Berwick, Gullane, Aberlady and Dirleton since June 2011.
- The results from this survey will also be considered, alongside data collected from the East Lothian Household Survey, Transition North Berwick's NB Living survey and the Lime Survey conducted with young people at North Berwick High School.
- Together this information will inform the direction of Local Community Planning across the ward and be used to generate key themes and priorities for the development of a Local Community Plan.
- Over the next few months further meetings and events will be organised to explore some of these themes in order to determine what local action will best address the needs identified.
- This process will culminate in the creation of a Local Community Plan which will be launched at a Local Area Forum for the whole ward in June 2012.